



# MEET THE Gazelle



AMIR BALABAN

## HEBREW NAME: צבי TZVI

The Hebrew word "צבי" (Tzvi) for gazelle comes from the root "צ-ב-י," meaning "beautiful" or "graceful," reflecting the Gazelle's elegant movements and appearance.



SPNI

## A SYMBOL OF ISRAEL

The gazelle is one of Israel's most iconic animals. Its name, Tzvi, appears in ancient texts, like the Book of Daniel, where the Land of Israel is called "Eretz Hatzvi" or the Land of the Gazelle. Today, nearly all of the world's remaining wild mountain gazelles live within Israel's borders.

## SUPER SPEED

Gazelles can run up to 60 km/h (about 37 mph)! Their speed helps them escape predators in open areas.

## STAY WOKE

With excellent sight, hearing, and smell, gazelles can sense danger from a distance, giving them time to get to safety.



VICTOR FRIDYEV

## BUILT FOR SURVIVAL

The gazelle's body and behavior are perfectly designed for survival. Its sleek, gray-brown coat helps it blend into the rocky landscape, while sharp horns show its age and strength and help protect against predators. Gazelles graze early in the morning and retreat to safe spots to chew the cud. Each fall, they breed, and after birth, the fawn is hidden while its mom grazes, returning to nurse. A week later, the fawn joins the herd. Living in groups helps gazelles stay safe, spot danger, and find food together.

## GENDER ROLES

Female gazelles live in herds with their fawns, while males form bachelor groups or guard their own territory.

## STATUS:

### ENDANGERED

Fewer than 4,000 gazelles remain in the wild. In the last 30 years, their population has dropped by over 40%, making their survival even more critical.





# Gazelle

## WHAT'S KILLING ISRAEL'S GAZELLES?



GAZELLE VALLEY, SPNI

### HABITAT LOSS AND FRAGMENTATION

Gazelles need wide, open spaces to roam, find food, and stay with their herd. But when people build roads, neighborhoods, and fences, it cuts through their habitat. Gazelles get stranded in small areas, separated from other herds, with less access to food and water. They also don't always realize when a road or infrastructure is built across their habitat, they'll keep walking there, and many end up getting hit by cars.

### TRASH THAT ATTRACTS TROUBLE

When people leave garbage or food behind, it can cause big problems for gazelles. Trash attracts predators like jackals and wild dogs that wouldn't normally be hanging around. These predators often attack baby gazelles who can't run fast enough to escape.

### ILLEGAL HUNTING

Even though hunting gazelles is illegal, some people still do it. This is called poaching, and it's a big problem. In the past, gazelles were hunted for food or sport. Some people see it as a tradition or a way to show off their hunting skills. Others don't realize how dangerous poaching is for the already small gazelle population.



VISITORS AT GAZELLE VALLEY, AMIR BALABAN

## SO, HOW DO WE RETURN GAZELLES TO ISRAEL'S LANDSCAPES?





# Gazelle

## HOW SPNI IS HELPING BRING THEM BACK

### GAZELLE VALLEY PARK IN JERUSALEM

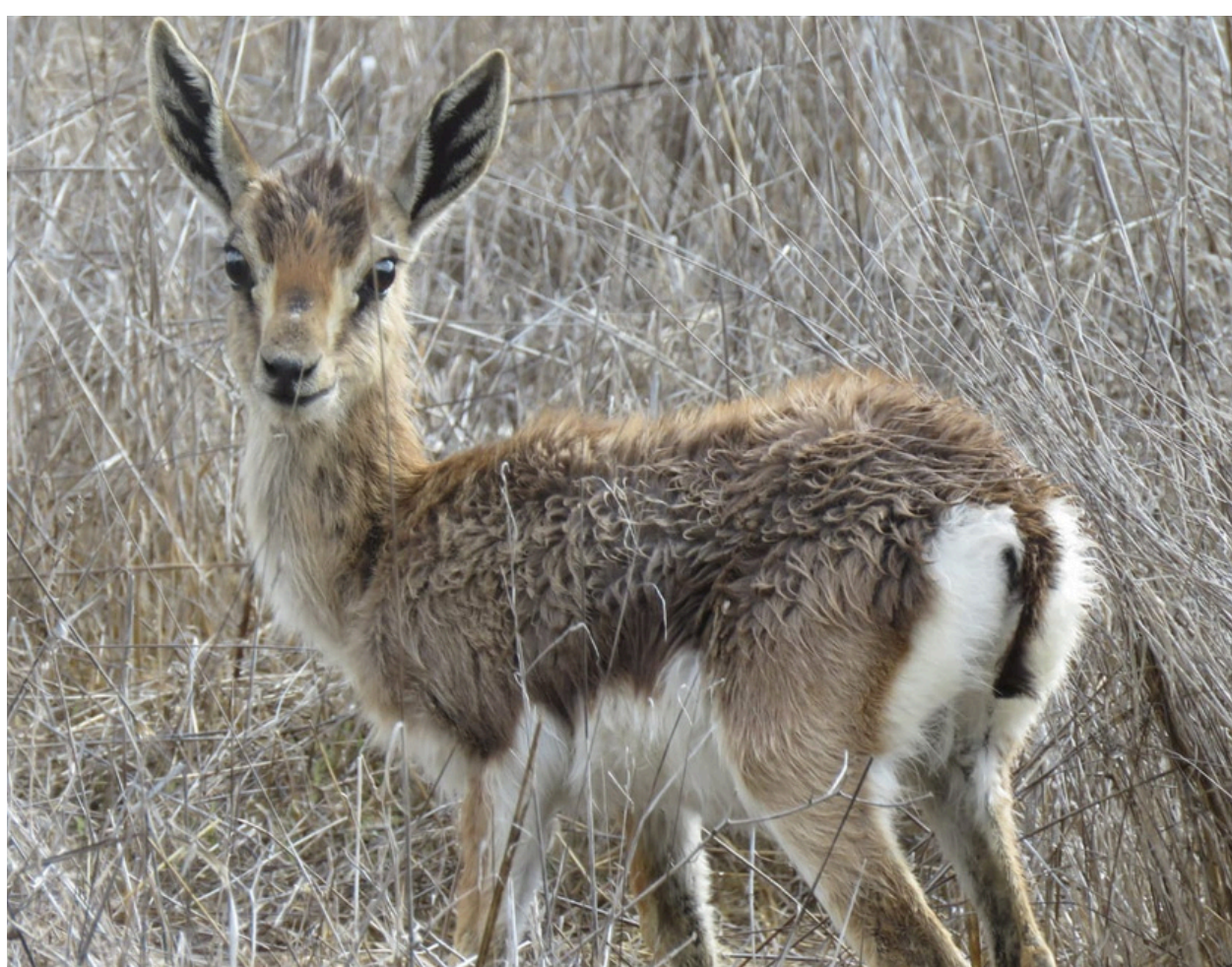
Right in the middle of Jerusalem, surrounded by busy streets and neighborhoods, lies Gazelle Valley Park, Israel's first ever urban nature reserve. This 64-acre park was created to protect a herd of mountain gazelles that once roamed freely in the Jerusalem hills. But Gazelle Valley isn't just for gazelles. It's a thriving ecosystem home to birds, tortoises, butterflies, and native plants. The park has a series of ponds that clean the city's dirty runoff water, filtering it naturally and turning it into a stream that supports plants and animals. The park was opened in 2015 with only three gazelles remaining from the herd. Today, thanks to years of careful protection and care, there are over 120 gazelles living in the park!

### RELEASING GAZELLES INTO THE WILD

SPNI doesn't just protect gazelles inside the park. Gazelle Valley is a launchpad to return more gazelles to the wild. Since 2021, SPNI has released 70 healthy gazelles from the park into the wild. SPNI carefully monitors them to make sure they are capable of finding food, protecting themselves, and connecting with other gazelles in the wild.



AMIR BALABAN



EFRAT YAGUR

### SHEILA'S STORY

"One of my most exciting recent experiences was helping to release a magnificent male gazelle into the Modi'in Forest. As we released the gazelle into his new environment, I felt the same way I did when I sent my first child off to school on her own!

'Go well, dear gazelle. Take care of yourself from any evil around you! Survive and thrive! My love will be with you always!'





# Gazelle

## AN ACTIVITY FOR YOU

Choose to be Tzviah (Mother Gazelle) or Ofer (Fawn), then take turns moving one or two spaces at a time along the path, while facing challenges and finding help, with the goal of reuniting Tzviah and Ofer at the same spot to win!

### TZVIAH (MOTHER GAZELLE)



<b>HIGHWAY</b> A speeding car's headlights stunned you while crossing the road. Skip one turn to recover from the scare.	<b>GREEN CORRIDOR</b> You discover a path that connects nature areas over the road. Move forward two more spaces.	<b>JACKALS</b> A pack of jackals was drawn to the smell of trash nearby. Skip one turn while you hide.	<b>LEAFY TREE</b> You find a shady tree full of tasty leaves. You're safe to stay here.	<b>TRASH CAN</b> A family went camping but didn't close the trash can lid. Skip one turn until you recover from eating leftover snacks.	<b>NATURAL SPRING</b> You found fresh water that gives you strength to keep going. Move forward one more space.
<b>GV PARK</b> You find a beautiful nature park in the middle of the city. You're safe to stay here, or move two spaces forward.					
<b>POACHER</b> A poacher hit you with a tranquilizer dart. Go back 1 space while you wake up and find your way again.	<b>TALL GRASS</b> The natural landscape hides you from predators. You're safe to stay here.	<b>CONSTRUCTION</b> A busy road was built through your habitat. Go back 2 spaces while you find a safe place to cross.	<b>HERD HELP</b> A friendly gazelle invited you to join their wild herd for a bit. Move forward two more spaces.	<b>WILD BOARS</b> A wild boar chased you off your path! Go back 1 space to find a safer route.	<b>GOOD WEATHER</b> The weather is excellent for walking in the afternoon. Move forward two more spaces.

### OFER (FAWN)



**Thank you so much for choosing the Gazelle as your endangered animal!**

Your interest and support can make a real difference in helping protect these incredible creatures and their future. Keep prancing like a gazelle!